



arlo™

Arlo Go Outdoor Power Adapter  
Quick Start Guide

# Welcome

Thank you for choosing Arlo.  
Getting started is easy.

## What's Included



Outdoor power adapter  
(varies by region)



Arlo Go wind bracket



Arlo Go  
USB port cap

## Safety Guidelines

- When you use the outdoor power adapter, do not place your camera on a flat surface without an Arlo outdoor mount.
- Install the provided wind brackets for support between the camera and the power adapter.
- Connect the outdoor power adapter only to a weatherproof power outlet.
- You can power the camera with the power adapter even when a battery is not installed in the camera.

## Temperature

- The outdoor power adapter can be used when the temperature is 32–122°F (0–50°C).
- Arlo camera rechargeable batteries will not charge when the temperature drops below 32°F (0°C). The battery resumes charging when the temperature rises to 32°F (0°C) or above.
- Arlo cameras record videos at temperatures higher than –4°F (–20°C).

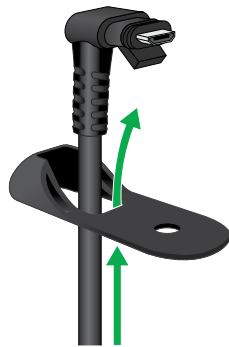
# Installation

1. Choose a location to mount your camera and install the outdoor mount first.
2. Remove the USB port cap from the camera.

*Note: Replacement USB port caps are included in case you want to use the camera wire-free later.*



3. Slide the wind bracket onto the power adapter cable.  
The wind bracket supports the connection of the power adapter cable to your camera.



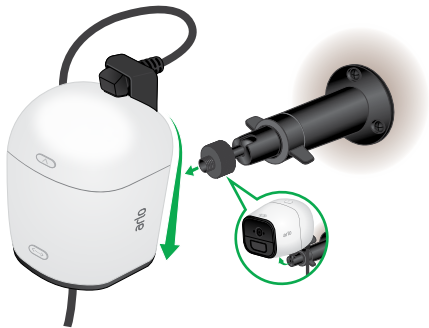
4. Connect the cable connector to the USB port on your camera and press in firmly.



5. Press the tab on the cable connector into the bottom of the USB port.



6. Slide the wind bracket along the cable until it fits tightly against the camera and align the bracket hole with the camera screw threads.
7. Screw the camera onto the mount.



8. Connect the power adapter to a protected electrical outlet.

*Note: If you decide to use the camera wire-free, plug a replacement USB cap into the USB port on the camera.*



©NETGEAR, Inc., NETGEAR, the NETGEAR Logo, and Arlo are trademarks of NETGEAR, Inc. Any non-NETGEAR trademarks are used for reference purposes only.

Si ce produit est vendu au Canada, vous pouvez accéder à ce document en français canadien à [arlo.com/docs](http://arlo.com/docs).  
(If this product is sold in Canada, you can access this document in Canadian French at [arlo.com/docs](http://arlo.com/docs).)

For the current EU Declaration of Conformity, visit  
[http://kb.netgear.com/app/answers/detail/a\\_id/11621/](http://kb.netgear.com/app/answers/detail/a_id/11621/).

For regulatory compliance information, visit  
<http://www.netgear.com/about/regulatory/>.

 **NETGEAR INTL LTD**  
Building 3, University Technology Centre  
Curraheen Road, Cork, Ireland

**NETGEAR®**

350 East Plumeria Drive  
San Jose, CA 95134, USA

February 2018



201-23002-02