



arlo®

Arlo HD Camera  
plus Audio Doorbell  
Quick Start Guide



# View a video tutorial

To view a video tutorial, visit [www.arlo.com/support](http://www.arlo.com/support) and click the Arlo Doorbell.

For more information, look for *How do I set up my Arlo HD camera with an Arlo Audio Doorbell?*.



Scan the QR code to  
view the video



# What's in the box



Arlo base station



Arlo Wire-Free  
Camera



Lithium 123 battery



Base station  
power adapter  
(varies by region)



Ethernet  
cable



Wall mount



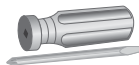
Mounting screws  
and anchors



Doorbell



AA batteries



Screwdriver



Wall screws  
and anchors



Wire extensions



Wire screws



Wire nuts

# Get the Arlo mobile app

You must use the app to install your Arlo system and your Arlo Audio Doorbell. The app provides step-by-step instructions.



# Install your Arlo devices in this order

1



**Arlo Pro base station**

2



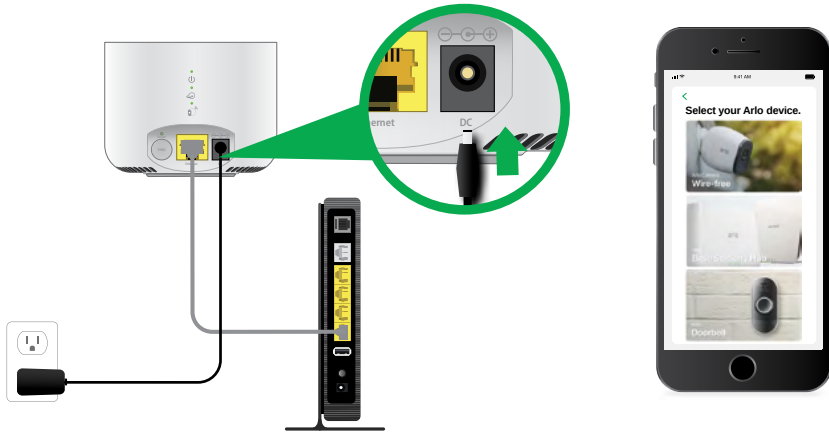
**Arlo Wire-free  
Camera**

3



**Arlo Audio Doorbell**

# 1. Power your base station and add it to your Arlo account





## 2. Power your camera and add it to your Arlo account

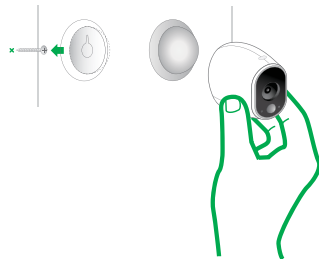
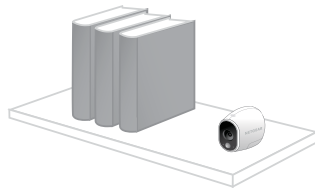


### 3. Place or mount your camera

You can place your camera on a flat surface or mount it on a wall. Choose a location with a clear, unblocked field of view and with a good signal to your base station.

#### Use the wall mount

- a. Fasten the mounting screw into the wall.  
If you're mounting the camera on drywall, use the plastic drywall anchors that we provide.
- b. Hang the mount from the screw.



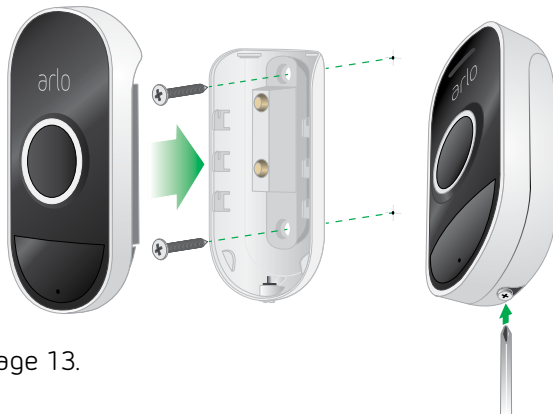
## 4. Power your doorbell and add it to your Arlo account

- Insert two AA batteries into your doorbell; your doorbell runs on battery power.
- Use your app to set up your Arlo Doorbell and add it to your account.



## 5. Mount your Arlo doorbell without wiring

- Secure the battery cover on your wall using the provided screws.
- Attach the doorbell to the battery cover.
- Secure the Arlo doorbell with the screw on the bottom of the battery cover.



**Note:** To mount your doorbell with wiring, go to page 13.

## 5. Connect your Arlo doorbell to trigger your existing chime (Optional)

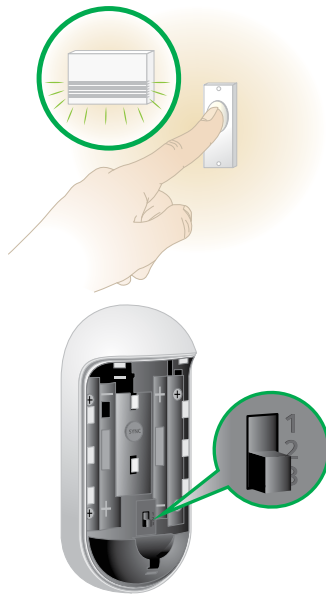
You can connect your Arlo doorbell to existing mechanical or electronic doorbells if they operate at a voltage between 8 and 24 volts AC. After you connect the doorbell, press the button on your Arlo doorbell to trigger your chime.

## Set the chime switch

Determine whether you have a mechanical or a digital chime.

Mechanical chimes usually make a sound like ding dong. Digital chimes can have a variety of sounds, some can play tunes.

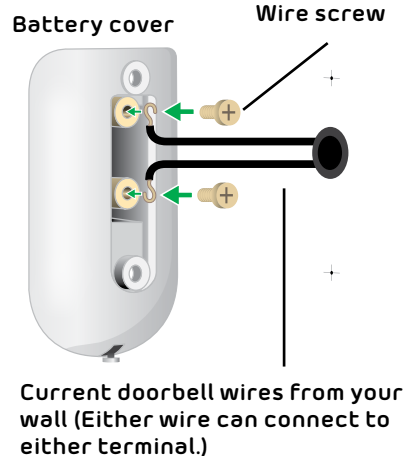
- If you have a mechanical chime, set the chime switch to position 2.
- If you have a digital chime, set the chime switch to position 1.



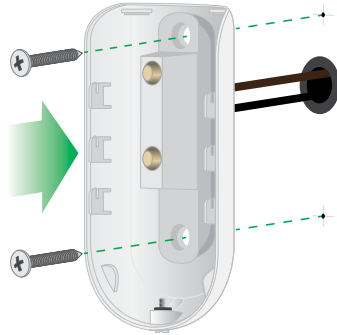
## Connect the doorbell battery cover to your existing chime

- Turn off the power to your current doorbell at the breaker.
- Remove your current doorbell.
- Connect the wires coming out of the wall to the terminals on the back of the Arlo doorbell battery cover with the provided screws.

If the wires are too short, use the accessories that we provide.



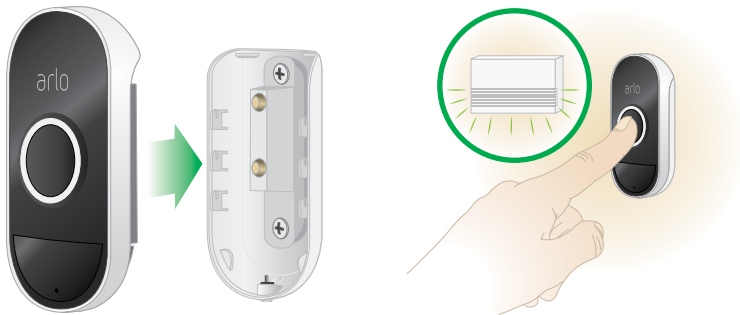
- d. Feed the wires back into your wall.
- e. Secure the Arlo battery cover on the wall using the provided screws.
- f. Turn the power on at the breaker.





## Attach the doorbell to the battery cover

1. Attach your doorbell to the battery cover.
2. Press the doorbell button, listen for a chime.



If you don't hear a chime, remove the doorbell from the battery cover and adjust the chime switch to position 3. Reattach the doorbell, press the doorbell button, and listen for a chime.

# Use your Arlo app

Use your app to set up and manage all your Arlo devices and your Arlo account.

To view useful tutorial videos, find troubleshooting tips, or get support, scan the QR code or navigate in your browser to visit [www.arlo.com/support](https://www.arlo.com/support).





©2018 Arlo Technologies, Inc. Arlo, Arlo logo, and Every Angle Covered are trademarks of Arlo Technologies, Inc.. Other trademarks are for reference purposes only.

## Compliance

To view regulatory information from the Arlo app, tap **Devices**, select your device, open the **Device Settings** menu, and tap **Device Info/Regulatory**.

For regulatory compliance information including the EU Declaration of Conformity, visit [www.arlo.com/about/regulatory/](http://www.arlo.com/about/regulatory/).

This device complies with Part 15 of the FCC Rules. Operation is subject to the following two conditions: (1) this device may not cause harmful interference, and (2) this device must accept any interference received, including interference that may cause undesired operation.

FCC ID: 2APLE18300388

IC ID: 23815-18300388



Arlo International, Ltd.  
Floor 3, Building 3 University Technology Center  
Curraheen Road, Cork, Ireland



Arlo Technologies, Inc.  
2200 Faraday Ave. Suite 150  
Carlsbad, CA 92008 USA

[www.arlo.com](http://www.arlo.com)  
[www.arlo.com/support](http://www.arlo.com/support)

October 2018



201-24193-03