



Arlo Q[®]

Quick Start Guide



Welcome

Thank you for choosing Arlo Q.

What's in the box



Arlo Q
Camera



USB cable



USB power
adapter



USB power
cable



Wall-mount
plate



Mounting screws
and anchors

Get the app

Download the free Arlo app to get started.

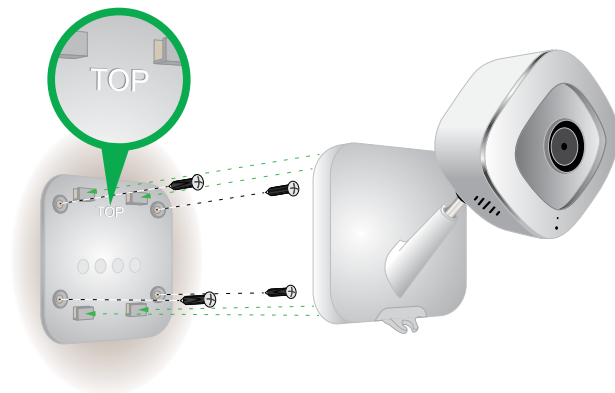
The app guides you through installation.



Use the wall mount

You can place your camera on a flat surface or mount it on a wall.

1. Place the wall plate and secure it with four screws.
2. Slide the camera into the wall plate.



Start streaming

Use the Arlo app to see your camera feed, arm and disarm your camera, and more.

To view useful tutorial videos, find troubleshooting tips, or get support, visit support.arlo.com.

©2018 Arlo Technologies, Inc. Arlo, Arlo logo, and Every Angle Covered are trademarks of Arlo Technologies, Inc. App Store is a service mark of Apple Inc., registered in the U.S. and other countries. Google Play and the Google Play logo are trademarks of Google Inc. Amazon, Alexa and all related logos are trademarks of Amazon.com, Inc. or its affiliates. Other trademarks are for reference purposes only.

Si ce produit est vendu au Canada, vous pouvez accéder à ce document en français canadien à arlo.com/docs.
(If this product is sold in Canada, you can access this document in Canadian French at arlo.com/docs.)

For the current EU Declaration of Conformity, visit
http://kb.netgear.com/app/answers/detail/a_id/11621/.

For regulatory compliance information, visit
<http://www.netgear.com/about/regulatory/>.

 Arlo INTL LTD
Floor 3, Building 3 University Technology Center
Curraheen Road, Cork, T12 EF21, Ireland



Arlo Technologies, Inc.
2200 Faraday Ave. Suite 150
Carlsbad, CA 92008 USA

www.arlo.com

www.arlo.com/support

April 2018



201-23715-01